



Palmerston Road | Taunton | TA1 1ER

Asking Price £210,000



**WILSONS**  
ESTATE AGENTS



Nestled in the charming area of Frenchweir in Taunton, this delightful terraced house offers a perfect blend of character and modern living. Spanning an impressive 871 square feet, this older property boasts a warm and inviting atmosphere, ideal for families or those seeking a comfortable home.

Upon entering, you are greeted by two reception rooms that provide ample space for relaxation and entertaining. These versatile areas can be tailored to suit your lifestyle, whether you envision a cosy sitting room or a vibrant dining space. The natural light that floods through the windows enhances the welcoming ambiance, making it a perfect setting for gatherings with friends and family.

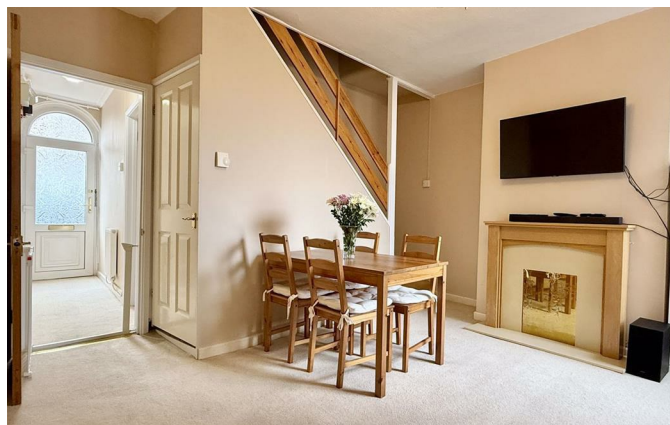
The property features three well-proportioned bedrooms, each offering a peaceful retreat at the end of the day. These rooms are perfect for accommodating family members or guests, and they provide the flexibility to create a home office or hobby space if desired.

Completing this charming home is a well-appointed bathroom, designed for both functionality and comfort. The layout ensures that daily routines are effortless, catering to the needs of modern living.

Outside, the property benefits from parking for one vehicle, a valuable asset in this sought-after location. The surrounding area is known for its friendly community and convenient access to local amenities, including shops, schools, and parks, making it an ideal choice for families and professionals alike.

In summary, this terraced house on Palmerston Road presents a wonderful opportunity to own a piece of Taunton's history while enjoying the comforts of contemporary living. With its spacious rooms, charming character, and convenient location, this property is sure to capture the hearts of many. Don't miss the chance to make it your own.

- An older style terraced house
- 3 bedrooms (main bedroom with shower)
- 2 reception rooms
- Double glazing and gas heating
- Suitable as a first time buyers house or as a rental opportunity
- Garage to the rear
- First floor WC and a ground floor bathroom
- Kitchen
- Sought after location close to River Tone walks
- Book your viewing today







## Hall

A welcoming hallway providing access to the lounge and dining room, with neutral walls and a clean, fresh look.

## Lounge

10'3" x 10'0" (3.13m x 3.06m)

The lounge offers a cosy space featuring a classic black fireplace framed by cream walls, a large window allowing natural light to fill the room, and neutral carpet flooring that complements the warm tones.

## Dining Room

13'10" x 10'11" (4.22m x 3.34m)

A bright dining room with a tasteful fireplace, wall-mounted TV above, and a wooden dining table set beneath the staircase. The room benefits from neutral decor and carpet underfoot, creating a comfortable and inviting space for meals and gatherings.

## Kitchen

10'1" x 8'0" (3.07m x 2.43m)

This kitchen is fitted with a range of light wood cabinets paired with speckled work surfaces, a gas hob, oven, and space for appliances including a washing machine and dishwasher. A window above the sink provides natural light while the flooring is finished in a light wood-effect style. Access to the rear yard is through the kitchen door.

## Bathroom

7'1" x 6'9" (2.17m x 2.07m)

The bathroom is fitted with a bathtub with overhead shower and glass screen, a pedestal sink, and a close-coupled WC. The walls are tiled in a neutral tone above the bath, and the floor features patterned tiling for added character. A frosted window allows natural light while maintaining privacy.

## Bedroom 1

14'1" x 10'0" (4.29m x 3.04m)

Bedroom 1 is a generous double room featuring a patterned wallpaper accent wall, neutral carpeting, and a ceiling fan light. It offers ample space for bedroom furniture and benefits from natural light through a front aspect window. An ensuite shower room with a corner shower cubicle and pedestal wash basin is situated off this bedroom.

## Bedroom 2

10'6" x 10'4" (3.20m x 3.14m)

Bedroom 2 is a comfortable double bedroom with neutral decor and carpet flooring. It has a bright window and adequate space for bedroom furnishings, offering a restful retreat on the first floor.

## Bedroom 3

7'9" x 7'3" (2.37m x 2.21m)

Bedroom 3 is a smaller single room with light walls and flooring, featuring a built-in wardrobe. The room is brightened by a front aspect window and provides a versatile space for a single bed or study area.

## WC

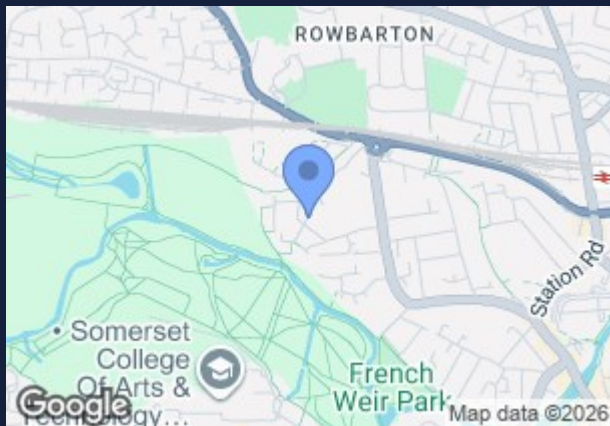
A handy WC room on the first floor with a modern close-coupled toilet and a small wash basin, finished with light walls and flooring for a clean and fresh feel.

## Rear Garden


The rear exterior features a paved yard with fenced boundaries providing privacy and an outbuilding with a door offering additional storage or utility space.

## Front Exterior

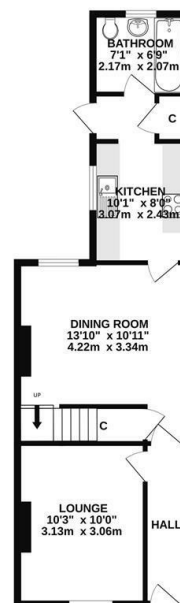
The front exterior presents a traditional brick terrace with a simple door and window arrangement, characteristic of the area's architectural style.



## Energy Efficiency Rating

	Current	Potential
Very energy efficient - lower running costs		
(92 plus) <b>A</b>		<b>87</b>
(81-91) <b>B</b>		
(69-80) <b>C</b>	<b>72</b>	
(55-68) <b>D</b>		
(39-54) <b>E</b>		
(21-38) <b>F</b>		
(1-20) <b>G</b>		
Not energy efficient - higher running costs		
<b>England &amp; Wales</b>	EU Directive 2002/91/EC	

GROUND FLOOR



1ST FLOOR



Whilst every attempt has been made to ensure the accuracy of the floorplan contained here, measurements of floors, windows, doors and any other items are approximate and no responsibility is taken for any error. Prospective purchasers are advised to verify the measurements and details of the property themselves. This plan is for illustrative purposes only and should not be used as a basis for any prospective purchase. The services, systems and appliances shown have not been tested and no guarantee is given as to their operability or efficiency can be given. Made with Metaplan C5025



Council Tax Band B EPC Rating C



SCAN ME

DISCLAIMER Wilsons has not inspected or tested any equipment, fixtures, fittings, or services within the property, and cannot confirm their working condition or suitability. We recommend you consult a Solicitor or Surveyor to verify the condition and functionality. Information regarding tenure is obtained by Land Registry, we advise that you obtain verification from your Solicitor. Items depicted in photographs are not included in the sale. The property is sold subject to rights of way, public footpaths, easements, wayleaves, covenants, and any matters that may affect the legal title. We have not verified the property's structural integrity, ownership, tenure, acreages, estimated square footage or planning/building regulations. Prospective purchasers are advised to seek validation of all the above matters prior to expressing any formal intent to purchase. Wilsons routinely refer buyers and sellers to local solicitors for conveyancing services and mortgage advisors for mortgage and protection advice. It is your decision whether to use these services. We receive a payment benefit for referring clients of no more than £250 per case. Once an offer is accepted by our client, an Administration Fee of £20 + VAT (£24) per buyer will be required for us to process the necessary checks relating to our compliance and Anti-money laundering obligations. This is a non-refundable payment and cannot be returned.

Charter House  
1 Business Park  
Dawlish Warren  
Dawlish  
EX7 0NH  
01823 324 324

info@wilsonsestateagents.co.uk  
<https://www.wilsonsestateagents.co.uk/>